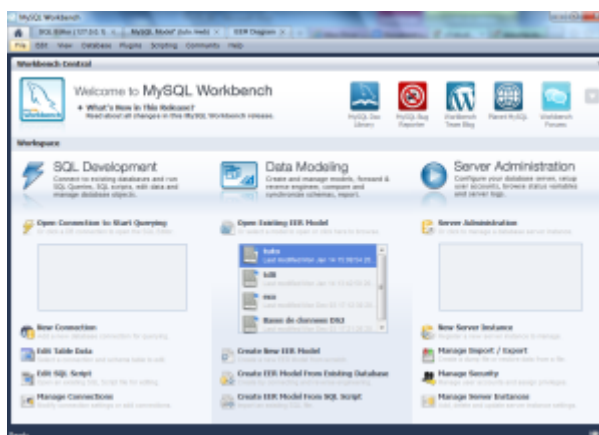


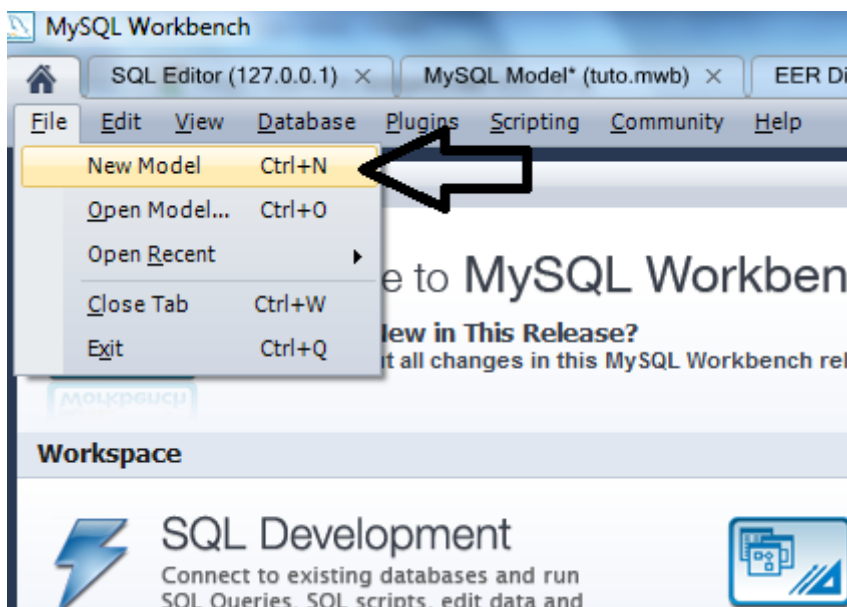
Tutoriel Workbench

Bienvenue sur le tutoriel Workbench

Création de la base




Pour créer une base de données, il faut cliquer sur l'onglet "File", puis sur New File





Création de la table

Pour créer une table, il faut cliquer sur "Add Table"


Physical Schemata

 **mydb**
MySQL Schema


Tables (0 items)

 Add Table 


Views (0 items)

 Add View

Routines (0 items)

 Add Routine

Routine Groups (0 items)

 Add Group


► Schema Privileges


► SQL Scripts

► Model Notes

Donner un nom à la table

Saisir le nom de la table ×

 Name: The char

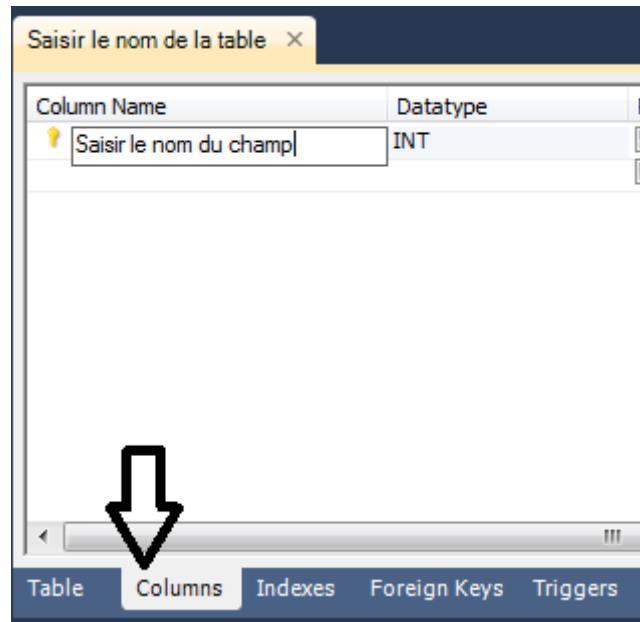
Collation:  The in the

Engine: The perfo

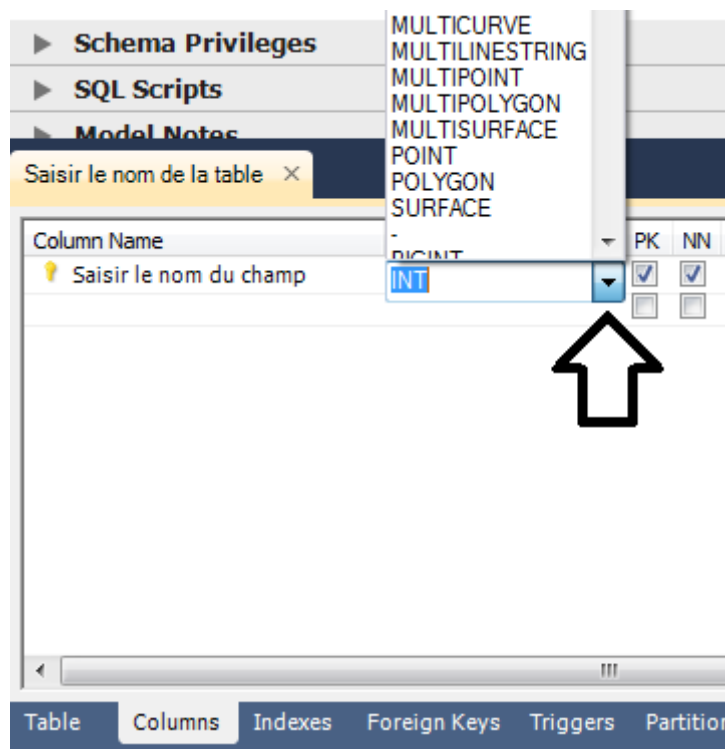
Comments:

Table **Columns** Indexes Foreign Keys Triggers Partitioning

Créer un champ



Modifier le type des données



From:
<http://slamwiki2.kobject.net/> - SlamWiki 2.1

Permanent link:
<http://slamwiki2.kobject.net/si3/etudiants/td7/gersan?rev=1358176838>

Last update: 2019/08/31 14:42

