

# Standard Widget Toolkit

## -- Création d'une application SWT

Installer au besoin Window Builder Pro dans Eclipse.

- Création d'un projet : Choisir **File/New/other/Window Builder/SWT/JFace java Project**
- Choisir **File/New/other/SWT/Application Window**

**Create SWT Application**  
Create a simple SWT application with Shell and event loop.

Source folder:

Package:

Name:

Create contents in:

protected createContents() method  
 public open() method  
 public static main() method

## -- Structure d'une application

```
public class MainWindow {  
  
    protected Shell shell;  
  
    /**  
     * Launch the application.  
     * @param args  
     */  
    public static void main(String[] args) {
```

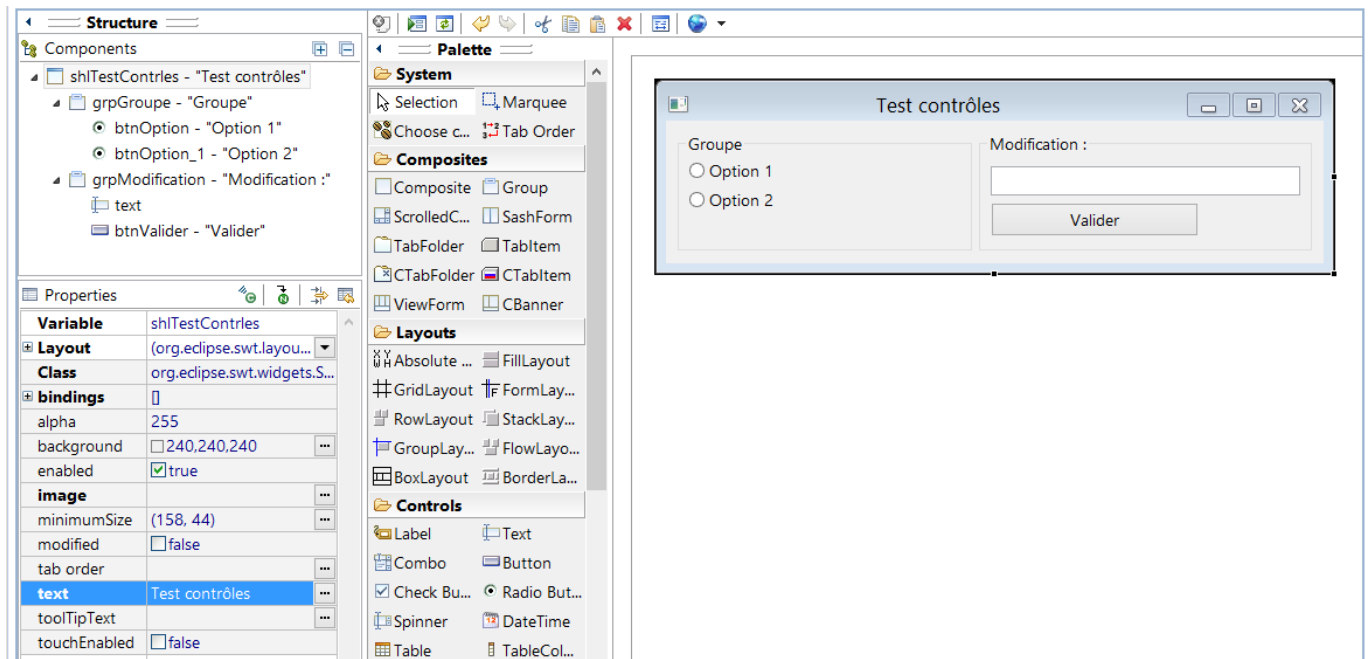
```
    try {
        MainWindow window = new MainWindow();
        window.open();
    } catch (Exception e) {
        e.printStackTrace();
    }
}

/**
 * Open the window.
 */
public void open() {
    Display display = Display.getDefault();
    createContents();
    shell.open();
    shell.layout();
    while (!shell.isDisposed()) {
        if (!display.readAndDispatch()) {
            display.sleep();
        }
    }
}

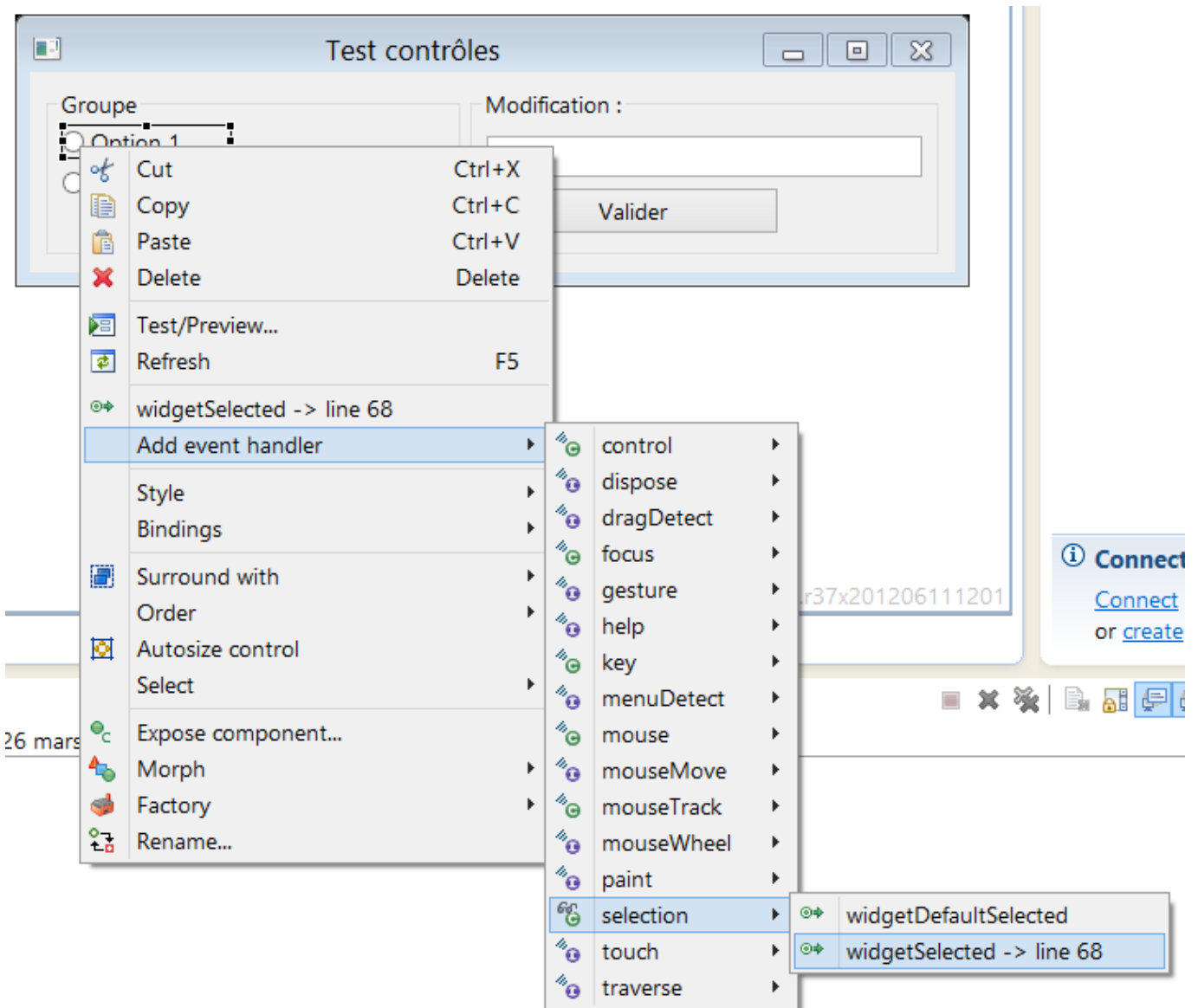
/**
 * Create contents of the window.
 */
protected void createContents() {
    shell = new Shell();
    shell.setSize(450, 300);
    shell.setText("SWT Application");
}
}
```

## -- Mode Design

Créer l'interface suivante en mode Design



## -- Implémentation du comportement



## -- Liens

- [SWT Widgets](#)
- [Rich Client Platform - Eclipse RCP](#)

From:

<http://slamwiki2.kobject.net/> - **Broken SlamWiki 2.0**

Permanent link:

<http://slamwiki2.kobject.net/slam4/gui/swt?rev=1364260802>

Last update: **2019/08/31 14:39**

