

Standard Widget Toolkit

-- Création d'une application SWT

Installer au besoin Window Builder Pro dans Eclipse.

- Création d'un projet : Choisir **File/New/other/Window Builder/SWT/JFace java Project**
- Choisir **File/New/other/SWT/Application Window**

Create SWT Application
Create a simple SWT application with Shell and event loop.

Source folder:

Package:

Name:

Create contents in:

- protected createContents() method
- public open() method
- public static main() method

-- Structure d'une application

```
public class MainWindow {  
    protected Shell shell;  
  
    /**  
     * Launch the application.  
     * @param args  
     */  
    public static void main(String[] args) {
```

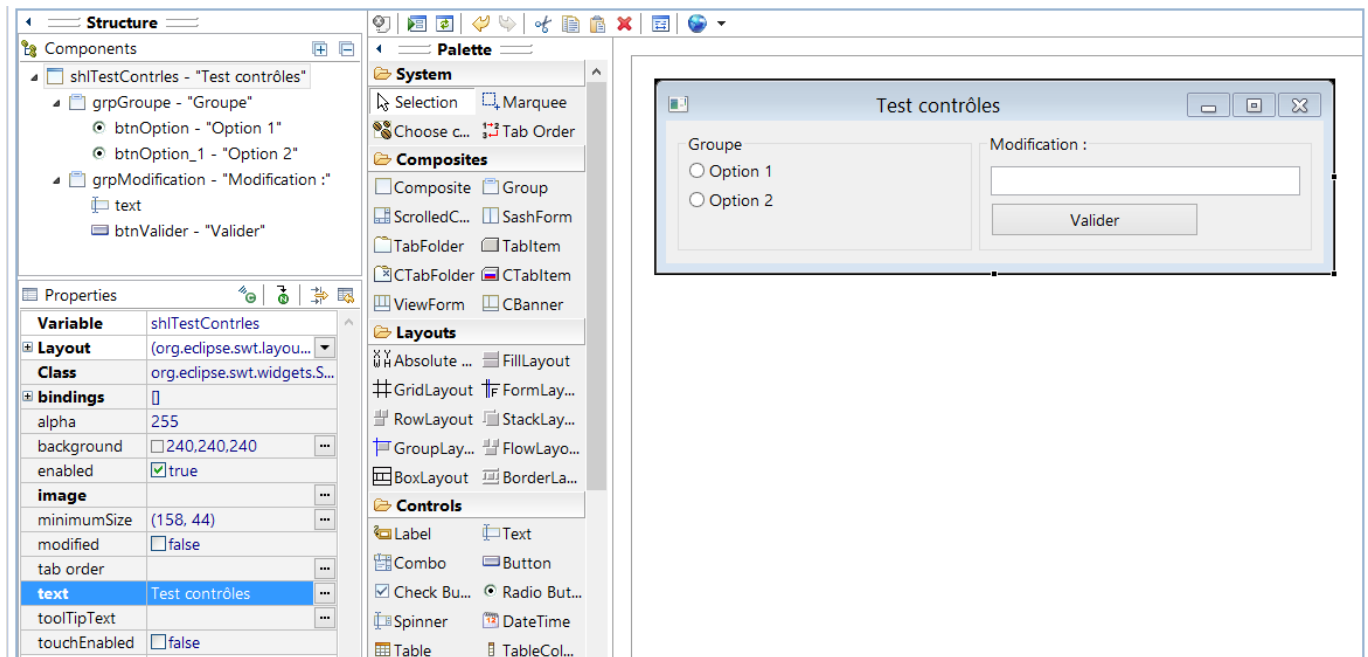
```
    try {
        MainWindow window = new MainWindow();
        window.open();
    } catch (Exception e) {
        e.printStackTrace();
    }
}

/**
 * Open the window.
 */
public void open() {
    Display display = Display.getDefault();
    createContents();
    shell.open();
    shell.layout();
    while (!shell.isDisposed()) {
        if (!display.readAndDispatch()) {
            display.sleep();
        }
    }
}

/**
 * Create contents of the window.
 */
protected void createContents() {
    shell = new Shell();
    shell.setSize(450, 300);
    shell.setText("SWT Application");
}
}
```

-- Mode Design

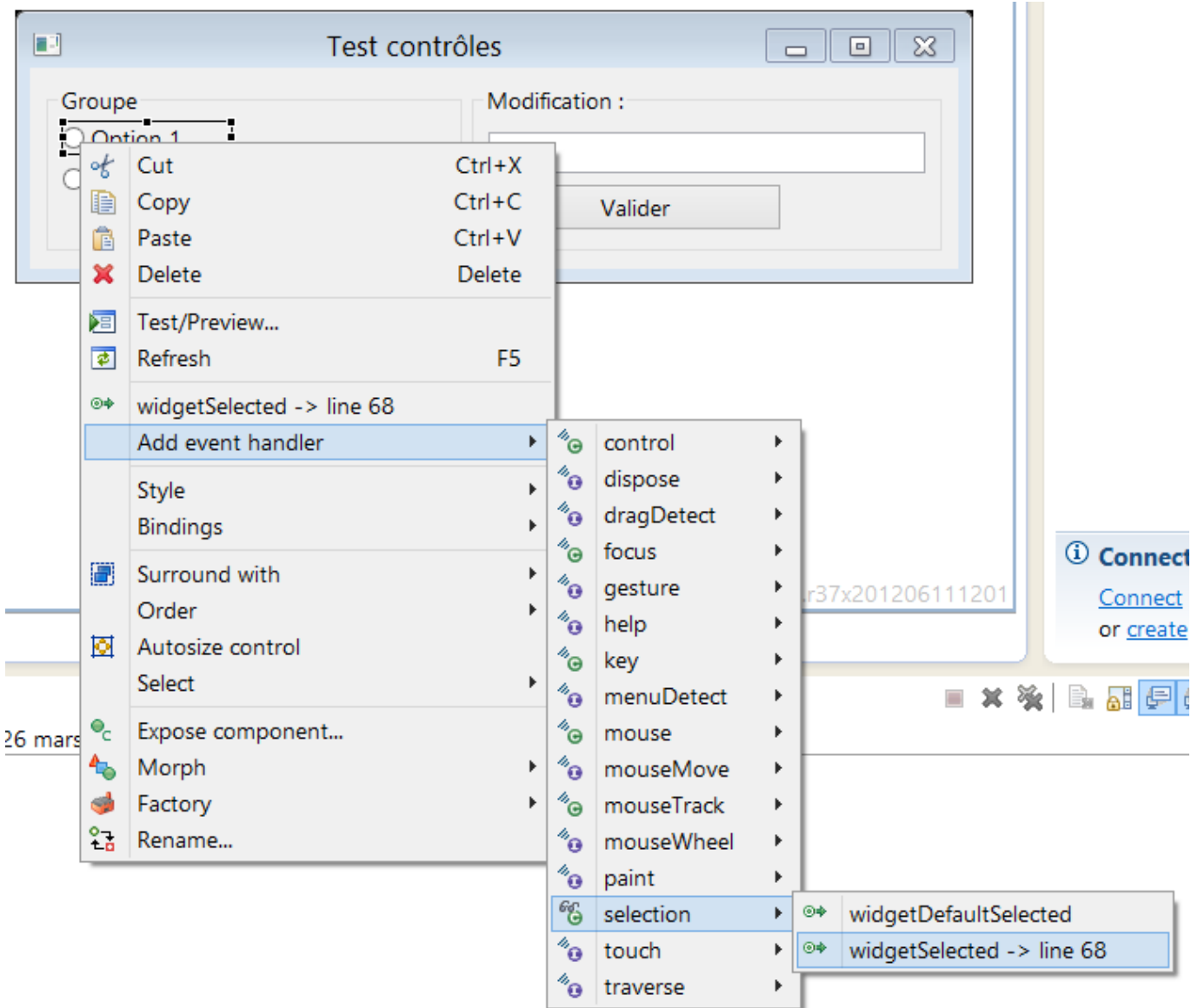
Créer l'interface suivante en mode Design



-- Implémentation du comportement

-- Ajout de listener

- Sélectionner L'option 1, faire apparaître le menu contextuel avec le bouton droit de la souris :
- Choisir **add Event Handler/ Selection/ WidgetSelected**



26 mars

```

btnOption.addSelectionListener(new SelectionAdapter() {
    @Override
    public void widgetSelected(SelectionEvent e) {

    }
});

```

-- Liens

- [SWT Widgets](#)
- [Rich Client Platform - Eclipse RCP](#)

From: <http://slamwiki2.kobject.net/> - **Broken SlamWiki 2.0**

Permanent link: <http://slamwiki2.kobject.net/slam4/gui/swt?rev=1364261036>

Last update: **2019/08/31 14:39**

